



Main Features

- Ranges from -1...+1 bar to 0...1000 bar
- Accuracy: $\pm 0.15\%$ FS typical
- ATEX certification for hazardous areas use
- Ambient/process temperature T4 (-40°...+80°C)
- SIL2 approval according to IEC/EN 62061

KX pressure transmitters are based on Gefran proven thick film on stainless steel technology, with totally welded metal structure without internal seals, in order to be suitable with any kind of fluid.

Also the housing is stainless steel made, with IP65 to IP67 degree of environment protection.

This transmitter is suitable for all those applications which require robustness, safety as well as high accuracy.

The KX series can be used in applications characterized by the presence of explosive atmosphere.

For this reason the probes are designed and manufactured according to the ATEX 94/9/CE Directive.

Main intrinsic safety characteristics

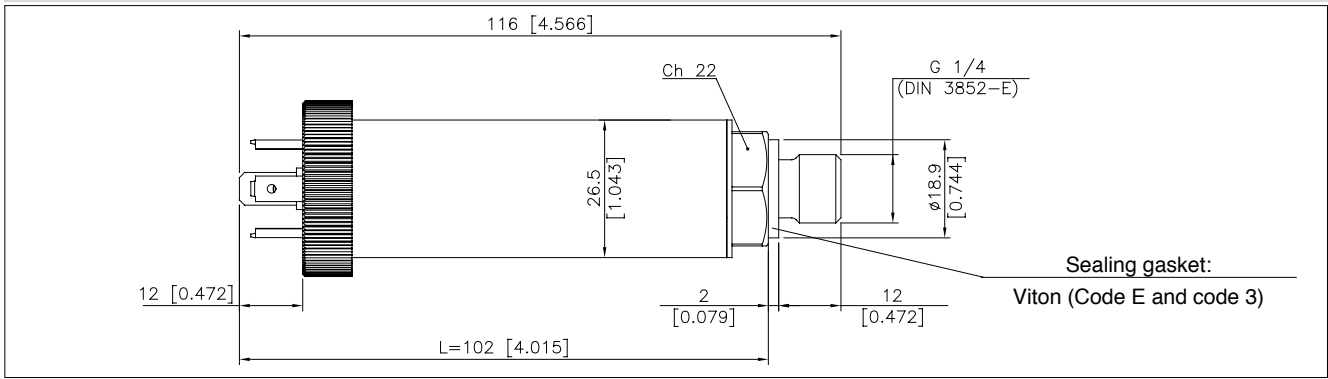
Transmitter designed and produced in compliance with Directive 94/9/CE ATEX and according to European standards for the Second group (II-surfaces), category 1, explosive atmosphere with presence of gases, fumes or mists (G) protection mode Ex ia T6, T5, T4 EC-Type Examination Certificate number: IMQ 13 ATEX 026 Type of protection : II 1G Ex ia IIC T6/T5/T4 Ga

TECHNICAL DATA

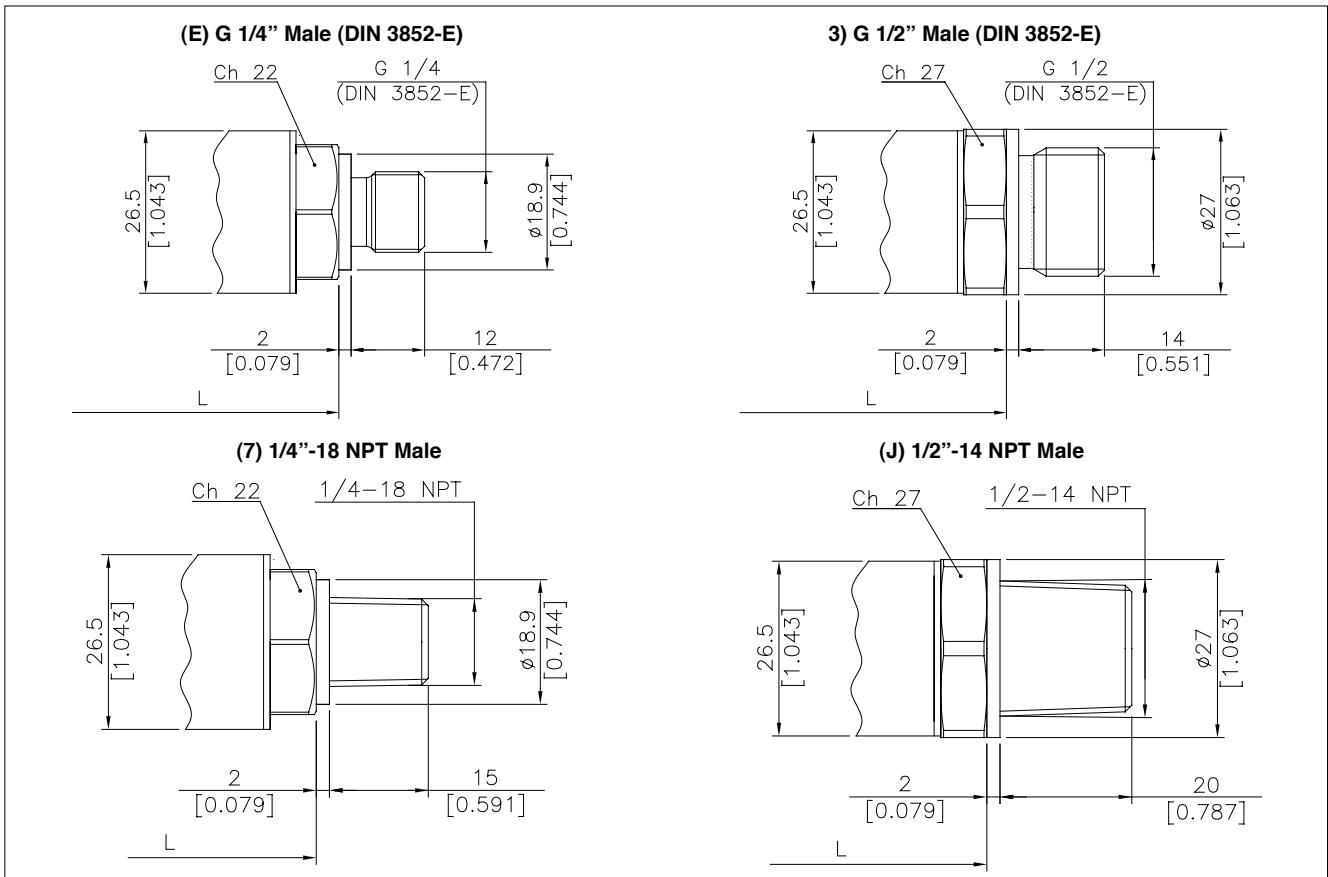
Output signal	Current 4-20 mA (2 wire system)
Accuracy (1)	$\pm 0.15\%$ FS typical; $\pm 0.2\%$ FS max
Non Linearity	$< \pm 0.1\%$ FS BFSL
Hysteresis	$< \pm 0.1\%$ FS
Repeatability	$< \pm 0.05\%$ FS
Pressure ranges	from ± 1 bar to 1000 bar (see table)
Resolution	Infinite
Overpressure (without degrading performance)	See table
Pressure containment (Burst test)	See table
Pressure media	Fluid compatible with 17-4PH and AISI 430F Stainless Steel
Housing	Stainless Steel INOX AISI 304
Power supply	10...30Vdc
Dielectric strength	In conformity to 500 Vac @ 60 sec. test
Zero output signal	4mA (nominal)
Full scale output signal	20mA (nominal)
Max allowed load	See load diagram
Long term stability	$< 0.1\%$ FS/year
Operating temperature range (process)	-40...+125°C (-40...+257°F) limited to temp. T4/T5/T6 (see table pag. 3)
Operating temperature range (ambient)	-40...+105°C (-40...+221°F) limited to temp. T4/T5/T6 (see table pag. 3)
Compensated temperature range	-20...+85°C (-4...+185°F)
Storage temperature range	-40...+125°C (-40...+257°F)
Temperature effects over compensated range (zero)	$\pm 0.01\%$ FS/°C
Temperature effects over compensated range (span)	$\pm 0.01\%$ FS/°C
Response time (10...90%FSO)	< 1 msec.
Zero offset tolerance	$\pm 0.15\%$ FS typ; $\pm 0.25\%$ FS max
Span offset tolerance	$\pm 0.15\%$ FS typ; $\pm 0.25\%$ FS max
Mounting position effects	Negligible
Humidity	Up to 100%RH non-condensing
Weight	110 gr. nominal
Mechanical shock	100 g / 11 msec. according to IEC 60068-2-27
Vibrations	20 g max at 10-2000Hz according to IEC60068-2-6
Ingress protection	IP65/IP66/IP67
Output short circuit and reverse polarity protection	YES
CE Conformity	According to EC Directive 2004/108/CE

1 Includes combined effects of Non Linearity BFSL (Best Fit Straight Line), Hysteresis and Repeatability (acc. to IEC 61298-2)

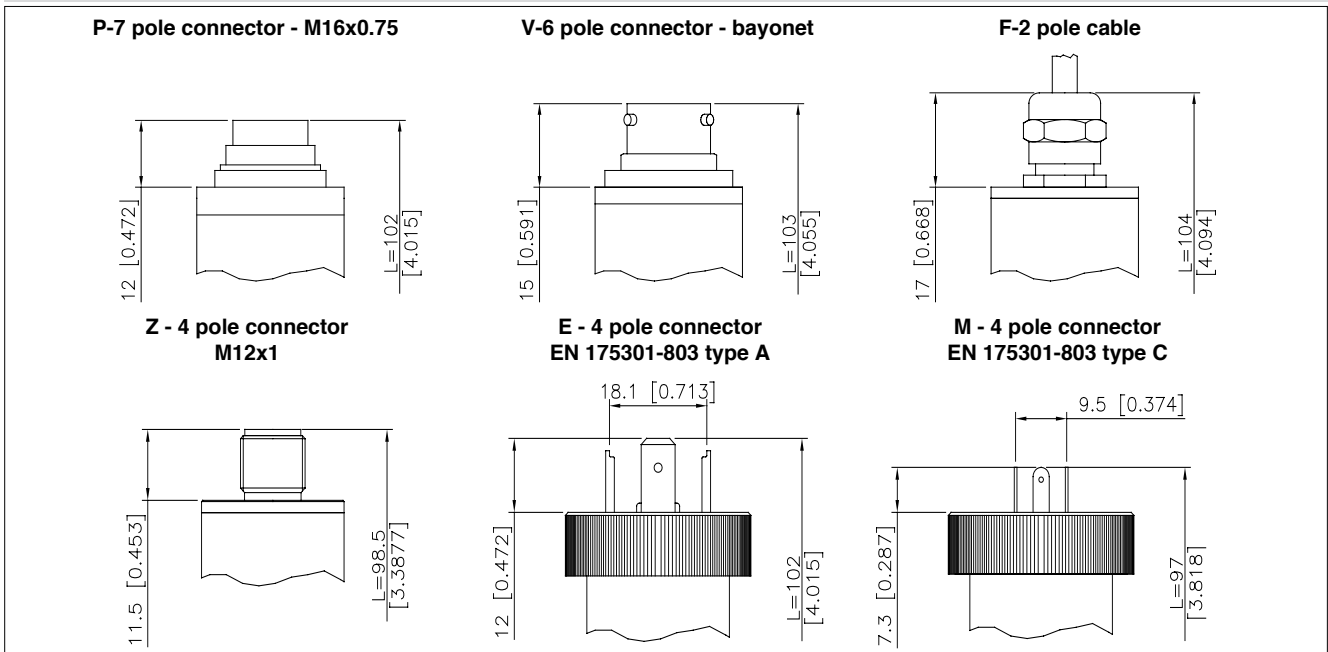
INSTALLATION DRAWINGS



PRESSURE CONNECTION



ELECTRICAL CONNECTION



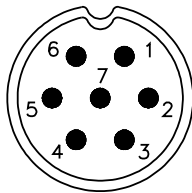
INTRINSIC SAFETY CHARACTERISTICS

	II 1G Ex ia IIC T6	II 1G Ex ia IIC T5	II 1G Ex ia IIC T4
Maximum voltage U_i	30Vdc	30Vdc	30Vdc
Maximum current I_i	100mA	100mA	100mA
Maximum power P_i	0.75W	0.75W	0.75W
Maximum inductance (*) L_i	0.25 mH	0.25 mH	0.25 mH
Maximum capacity (*) C_i	15nF	15nF	15nF
Fluid temperature	-40...+60°C	-40...+70°C	-40...+80°C
Ambient temperature	-40...+60°C	-40...+70°C	-40...+80°C

(*) Includes inductance and capacity values of a cable:(L typical 1 μ H/m and C typical 100 pF/m) with maximum length 15 mt

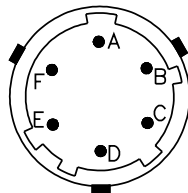
ELECTRICAL CONNECTION - Connectors

P - 7 pole connector



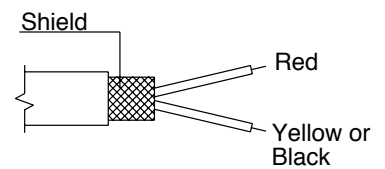
Male connector
7 pole M16x0.75
Protection rating IP67

V - 6 pole connector



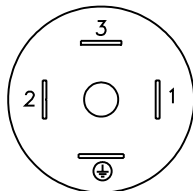
Male connector,
6 pole bayonet
Protection rating IP66

F - 2 pole cable



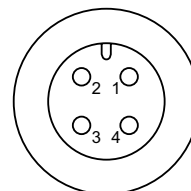
Shielded cable 2x0.25 - 1m.
Protection rating IP65

E/M - Connector EN 175301-803



E - 4 pin DIN type A
Protection rating IP65
M - 4 pin microDIN type C
Protection rating IP65

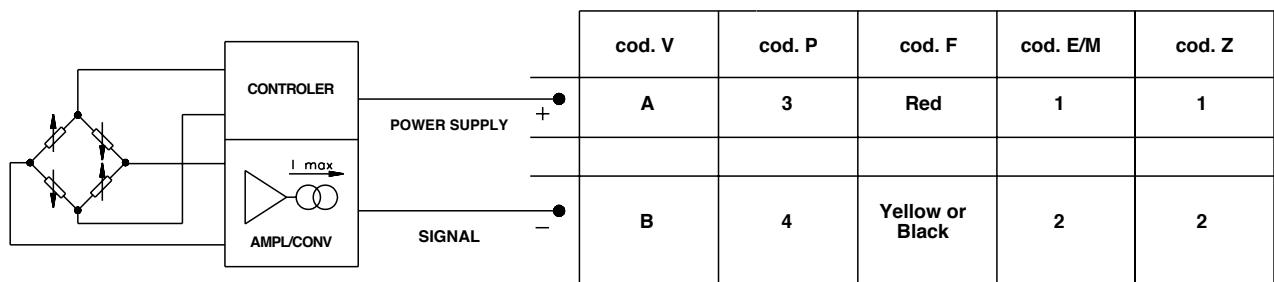
Z - Connector 4 pin M12 x 1



4 pole male connector
Protection rating IP67

ELECTRICAL CONNECTION - Connection diagrams

AMPLIFIED CURRENT OUTPUT - mod. E



PRESSURE RANGES

RANGES (Bar)	2	2.5	4	6	10	16	20	25	40	60	100	160	200	250	400	600	1000
Overpressure (Bar)	4	5	8	12	20	32	40	50	80	120	200	320	400	500	800	1200	1200
Burst pressure (Bar)	8	10	16	24	40	64	80	100	160	240	400	640	800	1000	1500	1500	1500
COMPOUND RANGES (Bar)	-1..+1		-1..+1.6		-1..+2		-1..+2.5		-1..+4		-1..+6		-1..+10				
Overpressure (Bar)	4		5		6		7		10		14		22				
Burst pressure (Bar)	8		10		12		14		20		28		44				

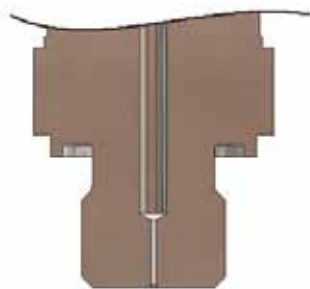
PRESSURE PEAKS PROTECTION

Many industrial applications, especially in hydraulics, could present dangerous phenomena like cavitation, liquid hammer or pressure peaks, due for example to pumps start and stop or fast closing of a valve.

These phenomena can be harmful to the transducer.

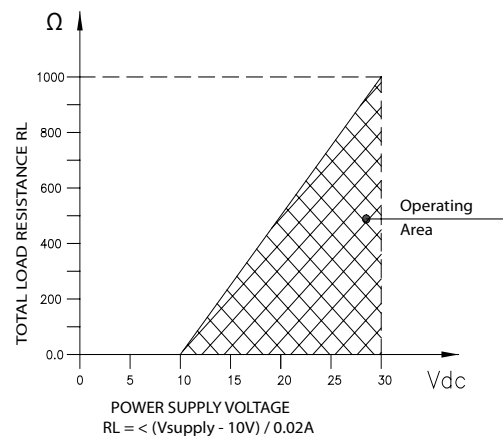
The KX series, upon request, is available with an integrated pressure snubber which, thanks to a 0.5mm diameter through hole, eliminates these harmful peaks, to protect the transducer.

Contact Gefran to request the version with pressure snubber



LOAD DIAGRAM

Current output



SIL CERTIFICATION (Safety Integrity Level) - FUNCTIONAL SAFETY

Safety is a critical requirement especially for machine builders. The new European Directive 2006/42/EC defines all the essential requirements in this regard.

In the context of functional safety, the European directive is received by the technical standard **IEC / EN 62061** "Safety of machinery - Functional safety of safety-related electrical, electronic and programmable electronic control systems" (SRECS)

KX pressure transmitters are certified SIL CL 2 by the Certification Body TÜV Rheinland with Test Report No. FS 28713306, in accordance with that rule, for use in applications "High Demand Mode" and then may be used in SRECS systems of machinery, where the safety variable to control will be the pressure of a fluid.

NOTE: 1) The SIL certification is supplied standard

2) Full specifications and installation and user manual of KX certified SIL 2 can be downloaded directly from the website www.gefran.com

ACCESSORIES ON REQUEST

Connector Plugs

Connection E

Connector EN 17301-803 Type A Prot. IP65

CON 006

Connection P

7 pole female cable connector, Prot. IP40

CON 320

Connection M

Connector EN 17301-803 Type C Prot. IP65

CON 008

Connection Z

Connector 4 pin M12x1 Prot. IP67

CON 293

Connection P

7 pole female cable connector, Prot. IP67

CON 321

Connection V

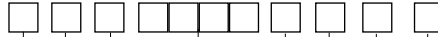
6 pole female cable connector, Prot. IP66

CON 300

ORDERING INFORMATION

Pressure transmitter

KX



OUTPUT SIGNAL	
4...20 mA	E

PRESSURE CONNECTIONS	
G 1/4 gas male (DIN 3852-E)	E
G 1/2 gas male (DIN 3852-E)	3
1/4"-18 NPT male	7
1/2"-14 NPT male	J

ELECTRICAL CONNECTIONS	
Connector EN 175301-803 A (P18)	E
2 pole shielded cable	F
4 pole connector M12x1	Z
Connector EN 175301-803 C (P 9.5)	M
7 pole screw connector	P
6 pole connector bayonet	V

Mechanical and/or electrical characteristics differing from standard may be arranged on request.

TEMPERATURE CLASS	
4	T4 (-40...+80°C)
5	T5 (-40...+70°C)
6	T6 (-40...+60°C)

RESPONSE TIME	
V	Fast (< 1 msec)

ACCURACY	
T	± 0.15% FS Typ.

RANGE			
	bar		bar
N01U	-1...+1	B16U	16
N1V6	-1...+1.6	B02D	20
N02U	-1...+2	B25U	25
N2V5	-1...+2.5	B04D	40
N04U	-1...+4	B06D	60
N06U	-1...+6	B01C	100
N01D	-1...+10	B16D	160
B02U	2	B02C	200
B2V5	2.5	B25D	250
B04U	4	B04C	400
B06U	6	B06C	600
B01D	10	B01M	1000

CALIBRATION STANDARDS

Instruments manufactured by Gefran are calibrated against precision pressure calibration equipment which is traceable to International Standards.

Es: KX - E - E - E - B35D - T - V - 4

Intrinsically safe pressure transmitter, 4...20mA signal output, G 1/4 male pressure connection, EN 175301-803 type A electrical connector, 0...350 bar measurement range, ± 0.15% FS accuracy, 1 msec response time, T4 temperature class.

Sensors are manufactured in compliance with: - EMC 2004/108/CE Electromagnetic Compatibility Directive
- RoHS 2002/95/CE Directive
- ATEX 94/9/CE Directive

Electrical installation requirements and Conformity certificate are available on our web site: www.gefran.com

GEFRAN spa reserves the right to make any kind of design or functional modification at any moment without prior notice.

Jiangmen LEADER Electronic Co., Ltd.

#68 2nd Str, CuiShanLingShui, WuYi Country Garden, Jiangmen City, Guangdong, China

Tel:+86 750 3289680 3289698 Fax:+86 7503289699

<http://www.leadersensors.com> E-mail:leader@leadersensors.com